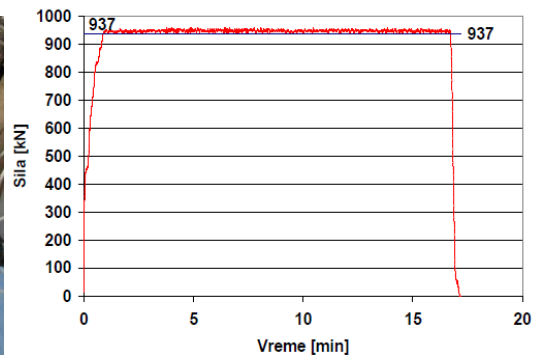
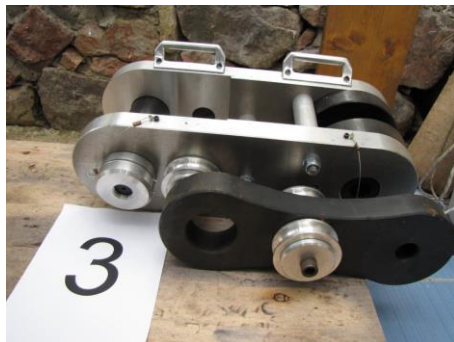




Outil se remorquage DEBOGGING TOOL

АЛАТА ЗА ВУЧУ АВИОНА AIRBUS SAS L5349 (98L09103001 100) ТЕСТ НА ЗАТЕЗАЊЕ



REPORT No 5001/15 OF THE MLG R/I TOOL 98V32104000, Ser. No KLK04222 START-UP TEST



The test object view after the test Elements of the test article view

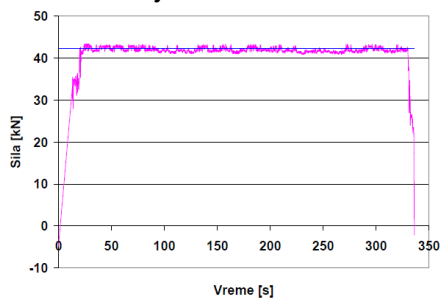
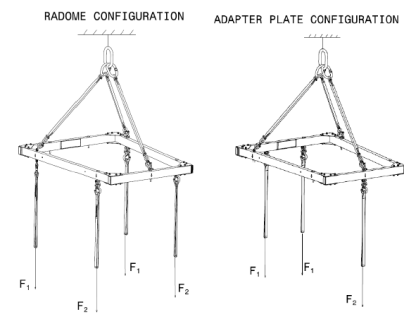


Figure 6 Load vs time

## REPORT No DC90-223/15 TOOL - R/I DBTS 98V44308830 START - UP TEST



Test set-up in the RADOM configuration.

S/No KLK 6119 view after finishing all the tests . Load Test Scheme,

## REPORT No DC90-05/2016 RAILS SET R/I.THSA 98 F274 08409 KLK05856 ACCEPTANCE TEST

Commissioner delivered four series of RAILS SET R/I.THSA subassemblies with series numbers as follows: KLK05856, KLK05921, KLK05987 and KLK06171.

Each series consists of next test specimens:

- 98 F274 08409.040 RAIL SYSTEM 1



The 040 RAIL SYSTEM 1 test set-up



Test object 040 RAIL SYSTEM 1 view after the test



98 F274 08409.042 RAIL SYSTEM 2



*Test set-up of the 042 RAIL SYSTEM 2*



*Test object view after finish the test.*

□ 98 F274 08409.044 RAIL SYSTEM 3



*Test set-up of the 044 RAIL SYSTEM 3*



*Test object view after finish the test*

REPORT No DC90-05/2016 RAILS SET R/I.THSA 98 F274 08409 KLK05856 ACCEPTANCE TEST

□ 98 F274 08409.046 ADAPTER



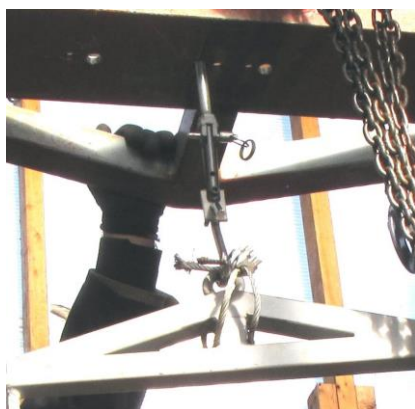
*Suspension and load introduction into the 046 ADAPTER*

□ 98 F274 08409.050 TRAVERSE



*Test set-up of the 050 TRAVERSE*

□ 98 F274 08409.118 CRANE TRACK



*Suspension and load introduction into the 118 CRANE TRACK*

REPORT No DC90-10/2016 SUPP-SERVO CTRL, RDDR 98V272 08001 KLK06096  
ACCEPTANCE TEST





Test set-up view - Configuration 1 (EHA)



Test set-up view - Configuration 2 (SCA)

REPORT No DC90-14/2016  
of the THS SHORING CRADLE-SA 98D07209001, Ser. No KLK05682 START-UP TEST



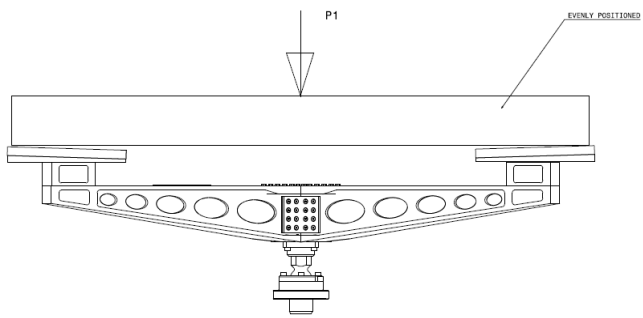
Test set-up view



Delivered test articles view



Delivered test articles view



Test load scheme

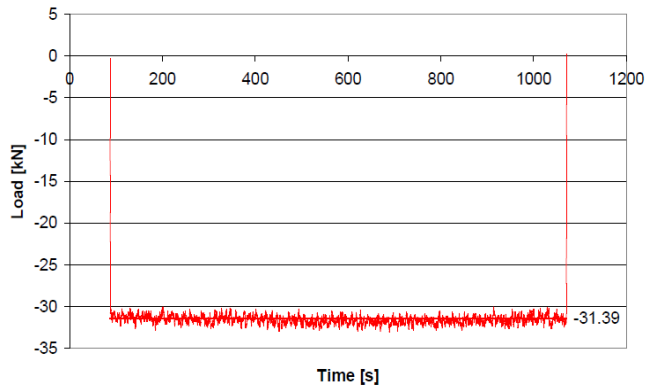


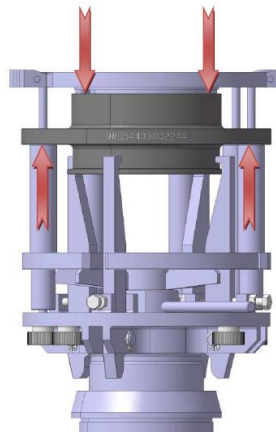
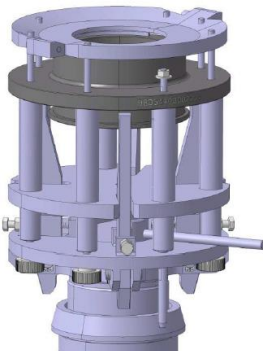
Figure 6 Load vs time



**R/I SPIGOT BALL JOINT TOOL 98D54403002000 KLK05840 START-UP TEST**



Figure 4 The "FREE BALL JOINT" test



Test « Free ball joint

Test « Ball joint extraction

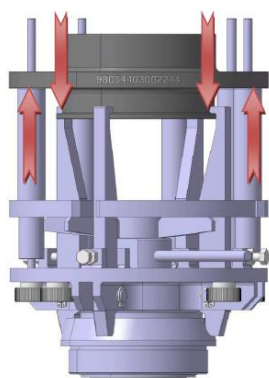
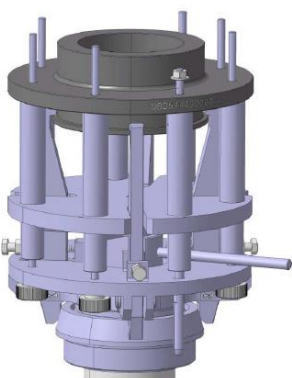


Figure 5 Pressure indicator during the test